

CYLINDERS

Euro Profile Cylinder



Application

Compatible with locks and lock cases using Euro profile cylinder.

Operation

360° rotation by operating key or thumbturn. Standard double cylinder, full key insertion disengages other side.

Materials

Body and plug: high quality brass
Cam and cogwheel: steel
Pins: nickel silver and stainless steel

Standard finishes

Nickel satin, brass, shiny brass

Special finishes

Nickel chrome, antique brass

Cylinder mechanism

Mul-T-Lock's unique, high precision pin tumbler system.

Keys

Reversible nickel silver key with plastic key head and colored insert. Also available in all nickel silver.

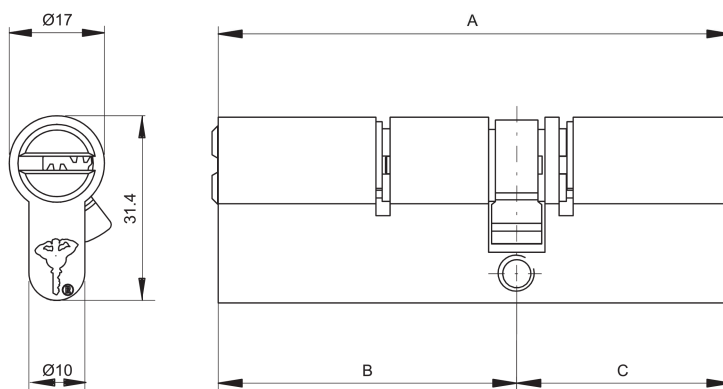
Cylinder options

- Classic, Interactive[®]+, MT5[®] platforms
- '3 IN 1' (changeable combination)
- Keyed different, keyed alike
- Master keyed
- Variety of thumbturns, cams and cogwheels
- Emergency cylinder with both sides permanently operational

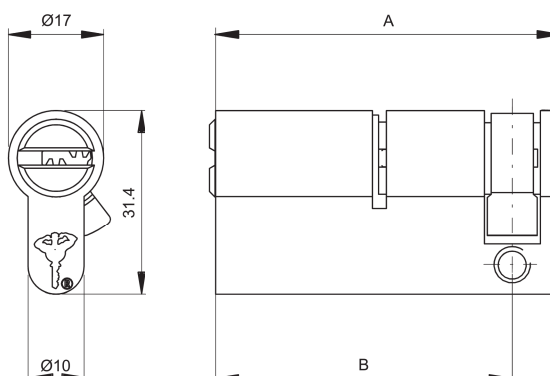
Standards

ISI 950, EN1303

Double cylinder



Single cylinder



www.mul-t-lock.com

Euro Profile Cylinder

Lengths Available (mm)

Double cylinder

A	B	C
62	31	31
66	31	35
66	33	33
70	35	35
71	31	40
71	33	38
75	40	35
76	31	45
76	33	43
76	38	38
78	33	45
80	40	40
80	45	35
81	31	50
81	33	48
81	38	43
82	47.5	34.5
83	35	48
83	45	38
85	45	40
85	50	35
86	31	55
86	33	53
86	38	48
86	43	43
88	40	48
88	50	38
90	45	45
90	50	40
90	55	35
91	31	60
91	33	58

A	B	C
91	38	53
91	43	48
93	40	53
93	48	45
95	50	45
95	55	40
95	60	35
96	31	65
96	33	63
96	38	58
96	43	53
96	48	48
100	50	50
100	55	45
100	60	40
100	65	35
101	31	70
101	38	63
101	43	58
101	48	53
101	68	33
105	55	50
105	60	45
105	65	40
105	70	35
106	53	53
110	55	55
110	60	50
110	65	45
110	70	40
110	75	35
111	48	63

A	B	C
115	60	55
115	65	50
115	70	45
115	75	40
115	80	35
116	33	83
118	33	85
120	60	60
120	65	55
120	70	50
120	75	45
120	80	40
125	50	75
125	65	60
125	70	55
125	80	45
130	50	80
130	55	75
130	65	65
130	70	60
130	95	35
135	55	80
135	60	75
135	65	70
135	100	35
136	68	68
140	40	100
140	60	80
140	65	75
140	70	70

Single cylinder

A	B
40.5	31
42.5	33
44.5	35
47.5	38
49.5	40
52.5	43
54.5	45
57.5	48
59.5	50
64.5	55
69.5	60
74.5	65
79.5	70
84.5	75
89.5	80
99.5	90
134.5	125

Note: For lengths from 40 mm up use standard plugs and additional spacers in order to get the required length. Other lengths are available by special order.

Not all lengths are available in all platforms.

Rim Cylinder



Application

Compatible with residential and commercial surface mounted door locksets. Interfaces with locksets of major brands. Suits wide range of lock mechanisms.

Operation

360° rotation by operating key.

Materials

Body and plug: high quality brass

Tail: steel

Pins: nickel silver and stainless steel

Standard finish

Nickel chrome matt, nickel chrome, shiny brass

Special finishes

Antique bronze, black, antique brass, PVD

Cylinder mechanism

Mul-T-Lock's unique, high precision pin tumbler system.

Keys

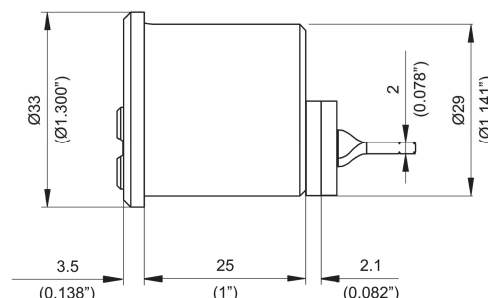
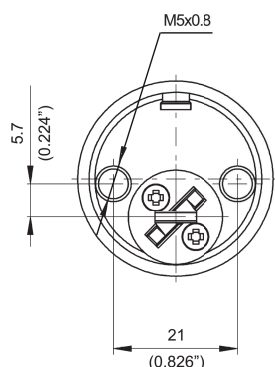
Reversible nickel silver key with plastic key head and colored insert. Also available in all nickel silver.

Cylinder options

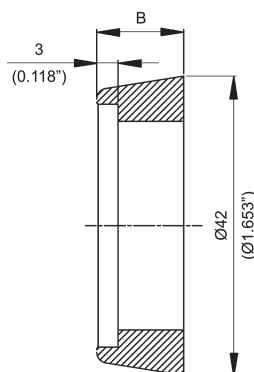
- Classic, Interactive[®]+, MT5[®] platforms
- '3 IN 1' (changeable combination)
- Keyed different, keyed alike
- Master keyed
- Variety of tails

Standards

ISI950



Spacer ring



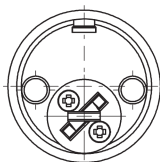
B	
mm	Inch
Flat ring**	
5.7*	0.224*
8.9	0.350
12.2	0.480
15.5	0.610

*Supplied as standard

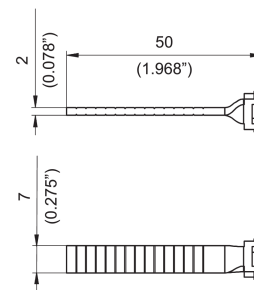
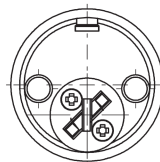
**For rim application

Tail options

Horizontal tail
P/N 86000005



Vertical tail
P/N 86000014



www.mul-t-lock.com

Reinforced Rim Cylinder

Ø29 mm (centered plug)



Application

Compatible with residential and commercial surface mounted door locksets. Central plug cylinder with four screws connecting the cylinder to the door.

Operation

360° rotation by operating key.

Materials

Body and plug: high quality brass
Tail: steel.

Pins: nickel silver and stainless steel

Standard finish

Nickel chrome matt, shiny brass

Special finishes

Nickel chrome

Cylinder mechanism

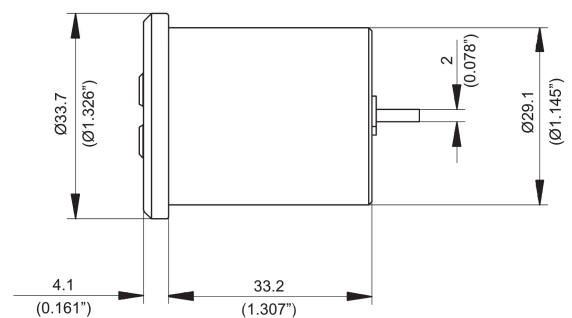
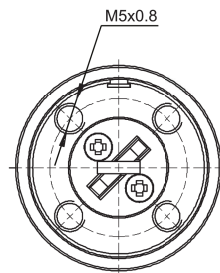
Mul-T-Lock's unique, high precision pin tumbler system.

Keys

Reversible nickel silver key with plastic key head and colored insert.
Also available in all nickel silver.

Cylinder options

- Classic, Interactive®+ platforms
- '3 IN 1' (changeable combination)
- Keyed different, keyed alike
- Master keyed



Euro Profile Modular Cylinder



With the Mul-T-Lock Modular cylinder kit, you can build cylinders of any desired length, from 31 to 80 mm.

Based on "single cylinder" lengths of 31, 33 and 35 mm, the kit contains a vast assortment of parts for building cylinder sides of any length, and creating cylinders of unusual sizes such as 31X31, 33X78, or 35X40, etc.

Assembly is as easy as 1,2,3. Just pick out the parts required for the desired length, according to the attached Reference Table, and assemble them together.

The cylinders are built on a central two-sided bar, with each side identified by a number indicating the length group it belongs to.

Bars for double sided cylinders are marked "X,X" (2 digits), while bars for single sided cylinders are marked "X" (one digit)

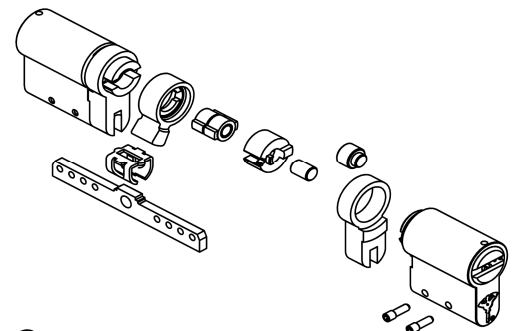
Example

The following parts are required for building a 31X46 mm double cylinder:

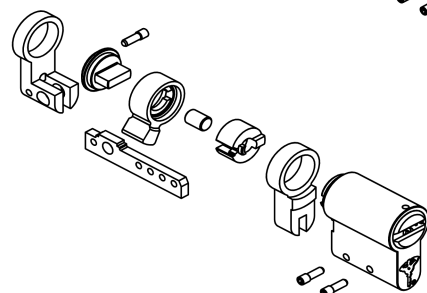
- For the 31 mm side: 1 bar type 1, 1 body type 31, plug 31, and nothing else
- For the 46 mm side: 1 bar type 2, 1 body type 31, plug 31, 15 mm body spacer, 15 mm plug spacer and 15 mm plug adapter
- 1 bar adapter
- 4 threaded pins

Note: Cylinder bodies and plugs should be ordered separately according to the profile (keyway) you are using, and based on the Reference Table. To restock the kit, use special catalogue numbers.

Double cylinder



Single cylinder



Special Cylinder Applications

3 IN 1 cylinder

The '3 IN 1' cylinder has been designed by Mul-T-Lock to allow users to easily change their key combinations through a simple and speedy process:

The user inserts and operates the next key in a sequence of three keys, and the introduction of each new key invalidates the previous key combination.

When all three combinations have been used, the cylinder may be re-keyed by an authorised Mul-T-Lock locksmith.

The '3 IN 1' cylinder may be ordered with three separate duplicating cards for the green, yellow and red keys.



TLO - Temporary Lock Out cylinder

Mul-T-Lock's TLO (Temporary Lock-Out) cylinder offers effective and reliable entrance control, without resorting to complex software and expensive electronic systems. Fully mechanical, user-friendly and easy to install, the TLO is based on an innovative concept incorporating three keys: a blue key for ordinary use; a red lockout key, which, when turned in the cylinder, makes the door inaccessible to all blue keys; and a green reversal key, which reverses the red key effect, making the door accessible once more to regular blue keys.

Thus, access of persons who hold a regular key to the door may be prevented for as long as the person in charge wishes, without the troublesome procedures of replacing the cylinder or collecting all keys. Access may also be restored easily at any time, at the turn of a green key.

TLO is available in Mul-T-Lock's telescopic pin platforms, Classic and Interactive®+.

Some suggested applications:

- Making a shop inaccessible to employees over the weekend.
- Making a storeroom inaccessible to company employees when sensitive equipment is in storage.



Construction master cylinder

Mul-T-Lock has developed a new-concept High Security construction master cylinder, that provides construction contractors with maximum convenience, while ensuring peace of mind for new property owners.

Contractors using the new product enjoy control of all apartments on the construction site - or even on several sites - with one master key.

Each cylinder in the system also has an owner key, provided to the owner when he/she moves into the apartment.

At this time a technician turns a special change key in the cylinder, disabling the contractor's master key. This procedure is not reversible.

This creative new solution is fully contained in the cylinder itself and requires no supplementary devices.



www.mul-t-lock.com

Special Cylinder Features

Reinforced cylinder

Enhanced resistance to breaking attempts.



Emergency cylinder

Operated with keys inserted and rotated on opposite sides, enabling both sides to be permanently operational.



Break Secure cylinder

Patented Euro profile cylinder, specially developed by Mul-T-Lock to meet a specific need: enhancing resistance to manipulation attacks. Unlike ordinary cylinders that tend to break in the middle when manipulated, allowing the door to be opened by attacker Break Secure snaps at the front. This keeps the door locked and the burglars outside, and permits the owners to open the cylinder with their original Mul-T-Lock keys when they return.



Anti-ligature thumbturn with external override

Innovative thumbturn with emergency override mechanism, specially designed to address the risk of self-harm within psychiatric and probationary type accommodation facilities.

Allows occupant privacy, while enabling immediate access for medical or supervisory staff if necessary.

